

VIBRA-DRUM®

SAND AND CASTING PROCESSORS

- ✓ Casting Cooling
- ✓ Gentle Shakeout
- ✓ Sand Conditioning



130 TPH VIBRA-DRUM®
7' 6" x 32' long

Proven in hundreds of applications worldwide, VIBRA-DRUM® sand and casting processors have revolutionized high volume mold/sand handling for foundry applications. This versatile two-mass system reduces sand lumps to original grain size and quickly equalizes shakeout sand temperatures without damaging castings - all in one continuous, energy-efficient operation.

Two-Mass vibrating drums deliver high capacity up to 400 TPH, plus superior material motion for efficient sand and casting conditioning and cooling. Natural frequency vibration produces a beneficial drum-like rotary motion that quickly reduces sand lumps without casting damage. High frequency agitation efficiently reduces sand to grain size. Put it all together and you have a simple, easy-to-maintain, non-rotating design with all the environmental benefits of a totally enclosed drum — air handling, seals and all interface connections are to non-rotating locations, allowing for moisture addition and ventilation throughout the drum. Our design simplifies the installation of feed and discharge systems and facilitates in-process inspection.



VIBRA-DRUM®

SAND AND CASTING PROCESSORS

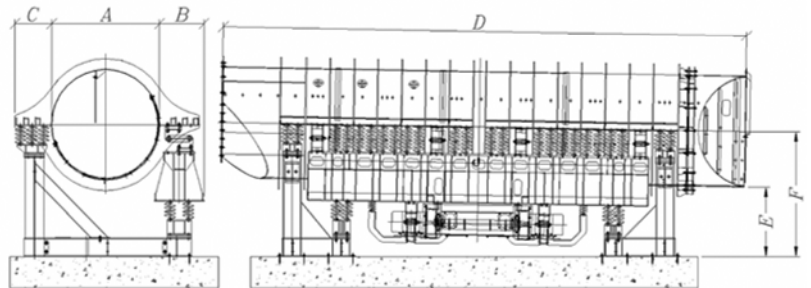
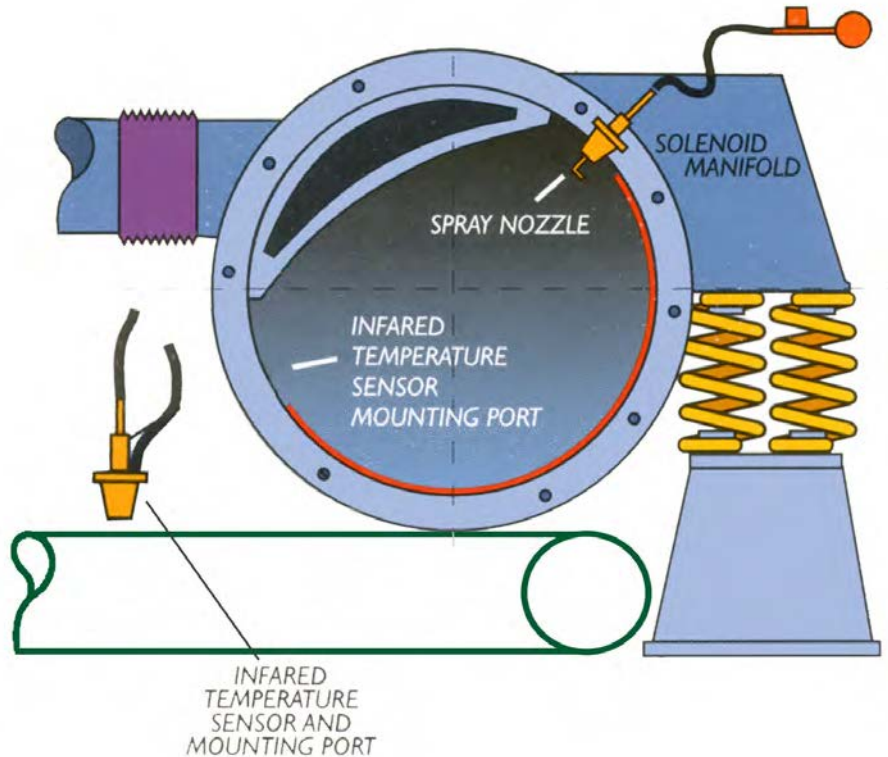
Typical VIBRA-DRUM® water additional system

Automatic, efficient conditioning for foundry sand

General Kinematics SPRAYCOOL™ water addition systems are designed for precise in-process conditioning of foundry sand... **not achievable in rotary or other technologies.** SPRAYCOOL™ improves the efficiency of evaporative cooling systems, and automatically adjusts water addition and blending rates to preset parameters. Custom engineered systems include all components and remote controls for state-of-the-art, non-contact temperature and weigh sensing.

Features:

- ✓ Water pressure regulating valve with integral strainer maintains constant nozzle pressure and precise flow rates
- ✓ Automatic air purge of infrared temperature sensors minimizes dust build up, assures consistent readings and process control
- ✓ Manual valves for easy service of strainer and optional booster pump
- ✓ Feedback sensor automatically adjusts and maintains preset sand discharge temperature



Sizing chart

Model Number	Ø	Width		Length	Discharge Ht	CL Elevation		Tonnage (sand)
		Drive	Non-Drive			F	E	
VD 5	5'-0"	1'-9"	1'-9"	20'-0"	2'-6"	5'-0"	5'-0"	25
VD 6	6'-0"	2'-9"	2'-6"	22'-0"	3'-0"	6'-0"	6'-0"	50
VD 7	7'-0"	2'-9"	2'-9"	34'-0"	4'-6"	8'-0"	8'-0"	100
VD 8	8'-0"	3'-6"	3'-0"	43'-0"	5'-0"	9'-0"	9'-0"	150
VD 9	9'-0"	3'-9"	3'-0"	45'-0"	5'-9"	10'-3"	10'-3"	225